

Features

- 2A switching capability
- High sensitive type, coil power is 150mW
- Standard DIP Construction terminal
- Ultra - small, gold - plated contacts
- Environmental friendly product (RoHS compliant)
- Outline Dimensions: (12.5×7.5×10.0) mm
- Main application: Power protection、 automation、 communication



CHARACTERISTICS

Specifications	Item		
Contact Data	Contact arrangement	1C	
	Contact resistance(initial)	100mΩ(6VDC 1A)	
	Contact material	AgNi+Gold Plating	
Rated value	Rated load(Resistance load)	1A 125VAC/30VDC	
	Max.switching voltage	125VAC/30VDC	
	Max.switching current	2A	
	Max.switching capacity	125VA/30W	
	Min.allowing load	5V 1mA	
Electrical performance	Insulation resistance(initial)	1000MΩ(500VDC)	
	Dielectric strength (initial)	Between open contacts	750VAC,1 min
		Between coil&contacts	1000VAC,1 min
	Operate time	≤5ms	
	Release time	≤5ms	
Mechanical performance	Shock resistance	Functional	98m/s ² (10g)
		Destructive	980m/s ² (100g)
	Vibration resistance	10Hz ~ 55Hz 3.3mm DA	
Endurance	Mechanical	1×10 ⁷ ops	
	Electrical	1A 125VAC/30VDC	1×10 ⁵ ops(ON/OFF=1s/9s)
Operate condition	Ambient temperature	-30℃~70℃	
	Humidity	5% to 85%	
Termination	PCB(DIP Encapsulation)		
Unit weight	Approx 2.2g		
Construction	Plastic sealed		

COIL DATA(23°C)

Standard Type

Nominal Voltage	Pick-up Voltage VDC	Drop-out Voltage VDC	Rated Current (±10%)	Coil Resistance (±10%)	Nominal Power	Max Voltage
DC 1.5V	≤1.13	≥0.07	132.7mA	11.3Ω	200mW	130%Nominal Voltage
DC 3V	≤2.25	≥0.15	66.7mA	45Ω		
DC 5V	≤3.75	≥0.25	40mA	125Ω		
DC 6V	≤4.50	≥0.30	33.3mA	180Ω		
DC 9V	≤6.75	≥0.45	22.2mA	405Ω		
DC 12V	≤9.00	≥0.60	16.7mA	720Ω		
DC 24V	≤18.00	≥1.20	8.3mA	2880Ω		

Sensitive Type

Nominal Voltage	Pick-up Voltage VDC	Drop-out Voltage VDC	Rated Current (±10%)	Coil Resistance (±10%)	Nominal Power	Max Voltage
DC 1.5V	≤1.2	≥0.07	100mA	15Ω	150mW	130%Nominal Voltage
DC 3V	≤2.4	≥0.15	50mA	60Ω		
DC 5V	≤4.0	≥0.25	29.9mA	167Ω		
DC 6V	≤4.8	≥0.30	25mA	240Ω		
DC 9V	≤7.2	≥0.45	16.7mA	540Ω		
DC 12V	≤9.6	≥0.60	12.5mA	960Ω		
DC 24V	≤19.2	≥1.20	6.3mA	3840Ω		

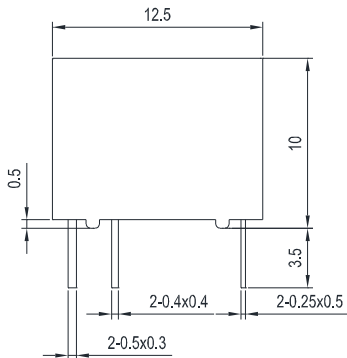
ORDERING INFORMATION

W13 -1C S L -XXX DC12V

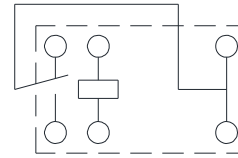
- ① Type
- ② Contact arrangement: 1C=1switched contacts
- ③ Construction: S=Plastic sealed
- ④ Coil power: Nil=Standard、L=Sensitive
- ⑤ Customer special code : numbers or letters denote customer's requirements
- ⑥ Coil specification: DC1.5/3/5/6/9/12/24V

OUTLINE DIMENSIONS, WIRING DIAGRAM AND PC BOARD LAYOUT (Unit: mm)

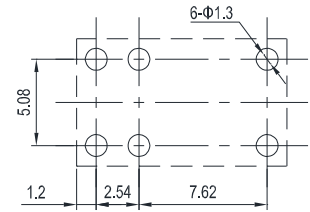
1C Outline Dimensions



Wiring Diagram (Bottom view)



PCB Layout (Bottom view)

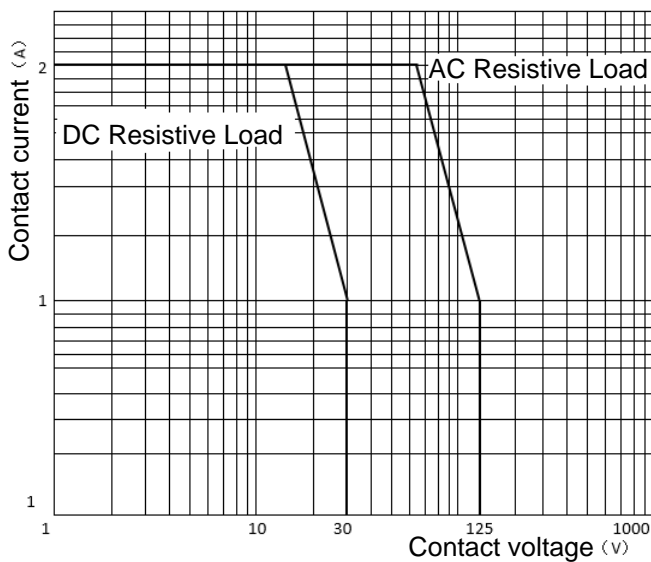


Notes: (1) In case of no tolerance shown in outline dimension: outline dimension ≤ 1 mm, tolerance should be ± 0.2 mm; outline dimension > 1 mm and < 5 mm, tolerance should be ± 0.3 mm; outline dimension ≥ 5 mm, tolerance should be ± 0.5 mm.

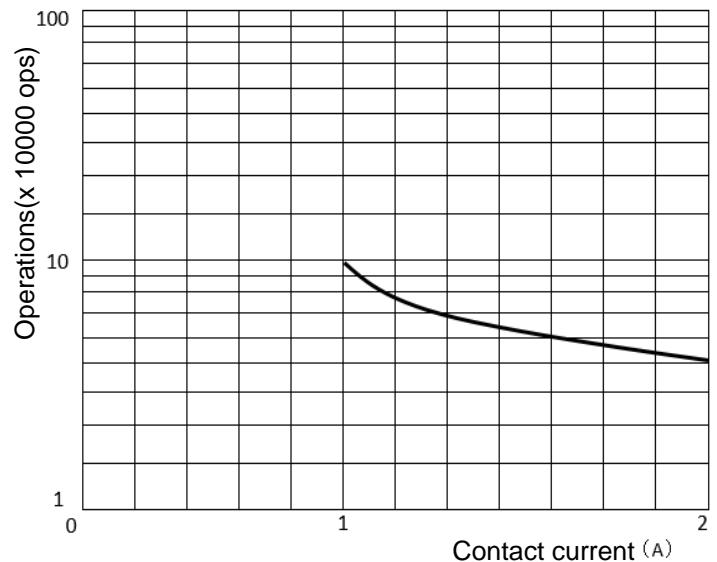
(2) The tolerance without indicating for PCB layout is always ± 0.1 mm.

PERFORMANCE CURVES

MAXIMUM SWITCHING POWER



ENDURANCE CURVE



NOTICE

- ① If the relay needs to be cleaned or used in bad environment (e.g. dust or organic gas), we recommend plastic sealed type.
- ② The specification is for reference only, specifications subject to change without notice.